

noddlechat

noddle-chat™ Quick Start Guide

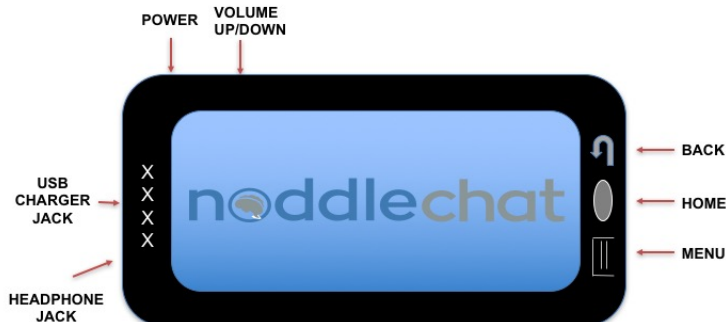
07-100003, Rev. 02

For detailed instructions, consult the noddle-chat User Manual

Instructional videos available at www.voxello.com/support

Using the noddle-chat speech generating app with the noddle™: The noddle-chat software runs on an Android tablet and uses vocabulary sets with picture icons that are specific for hospital and long-term care use. There are a range of sets to select from based on the communication needs of the patient (i.e. start, basic, full-, full+). The start set is primarily for use with patients who are new to noddle-chat™ in order to familiarize them with using the sensor to control the communication device. The full+ set is more complex and is what many patients will use when they demonstrate comfort and ease of use with the simpler sets and contains additional pages for patients who may be dealing with complex medical decisions, including end of life conversations.

Powering On/Off the noddle-chat tablet: The noddle-chat tablet is powered from either the provided DC power adapter (that can be plugged into the power strip on the patient's IV pole or to an AC outlet on the headwall) or secondarily by the internal rechargeable battery. The battery charge should last approximately 12 hours. While in operation under battery power, the tablet should be periodically checked for low battery charge. To conserve power the tablet will go into sleep mode. Touching the tablet screen or activating with the noddle will wake the device up.



Pairing the noddle and the noddle-chat tablet with

Bluetooth®: Use the tablet Android OS **Settings** to select Bluetooth® and turn Bluetooth® capabilities on. Press the Bluetooth® button on the noddle, and select the Scan option on the tablet. When the tablet has finished scanning for devices, select "noddle" from the Paired Devices list on the tablet.

To select a vocabulary for a given patient, complete the following steps:

1. Open noddle-chat application if it is not already open
2. Go to **Menu > Settings > System > New User**
3. With New User menu open, select from options organized by age group, gender, vocabulary complexity (for example "adult female start"). *Note: Selecting a new user will delete all content used by the last patient.*

The New User menu provides choice of voice and vocabulary set.

Voice Options: Adult female; Adult male; Teen female; Teen male; Child female; Child male

Vocabulary Set Options: Start (3 picture display, most simplified option); Basic (3x3 picture display, basic needs, feelings, room control options); Full- (4x3 picture display, basic needs with additional chat, entertainment, personal section, and keyboard); Full+ (4x3 picture display, everything from the full- with additional medical prognosis page)

How the noddle controls scanning and selecting phrases:

1. Use one click/touch to start the scan. Each single click/touch will step through the rows.
2. Use two clicks/touches to select a row. Then each single/touch will step through the cells in the row.
3. Use two clicks/touches to select the desired cell.

Verifying Scanning Mode: The noddle-chat™ uses two-switch scanning as an alternative to directly activating buttons on the touch screen. The tablet should already be in two-switch row-column scanning mode, but to verify or enable it, do the following:

1. Push the menu button to the left of the large center home button on the bottom of the tablet
2. Select **Settings > Input > Scanning**
3. Check **Enable Scanning** box
4. Select **Switch Access > Switch Configuration > Two Switch** (keyboard 1.1, keyboard 2.1)
5. Push the **Back Arrow** button
6. Select **Patterns > Mode > Row/Column**
7. Push the **Back Arrow** button until you reach the Vocabulary Set top level page

Setting up and exiting the Kiosk mode: The system default is for the tablet to be in Kiosk mode. In kiosk mode, the user does not have access to anything other than noddle-chat.

1. Within the settings page with 'input' as the first option, select **System > Kiosk mode**
2. Check **Kiosk mode box** to select Kiosk mode; Uncheck to allow access to the Android desktop
3. Push the **Back Error** until you reach the noddle-chat™ Home Page

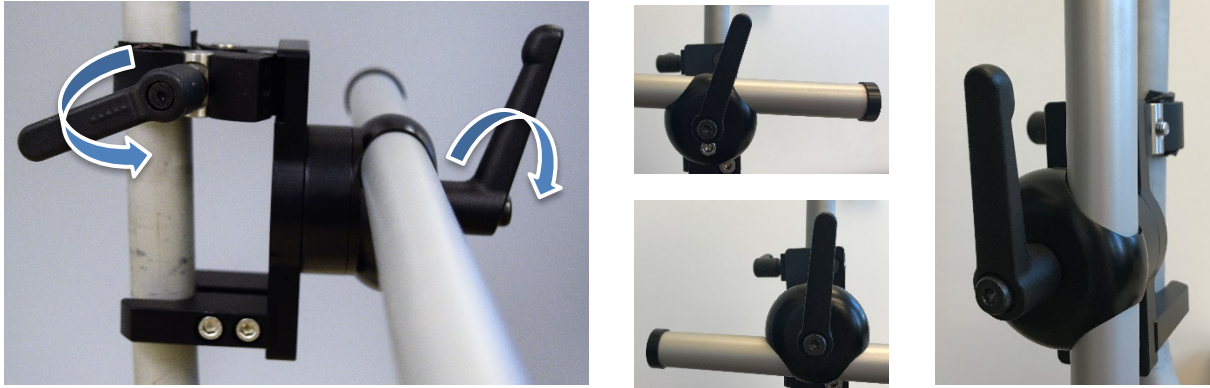


Cleaning/Disinfecting of noddle™ and Disposal of Sensors: The noddle-chat™ tablet is intended for multiple uses. Cleaning should follow the facility's protocol for medical equipment cleaning and disinfecting.

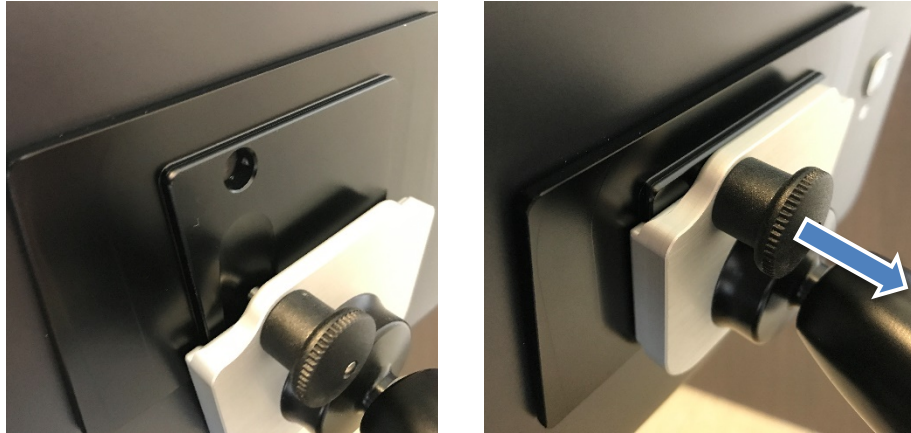
Equipment Storage: Store all noddle equipment together to ensure correct pairing of the noddle with the noddle-chat tablet.

Mounting the tablet on an IV pole: Each tablet has a quick release plate that can be attached to the adjustable arm that can be clamped onto an IV pole to allow optimal positioning of the tablet where the patient can see it.

To mount arm to the IV pole, align clamp openings around the pole, and tighten the clamp lever to secure. The arm can be rotated to the left or right by loosening the large lever at the base of the arm. Tighten the lever to lock the arm into position. The arm can also be rotated up to be parallel with the IV pole for ease of transportation with the IV pole.



To mount the tablet to the arm, align the plate on the back of the tablet with the silver mount at the end of the arm. Slide down into the mount, and the plate will snap into place. To release the tablet, pull the quick release knob.



To adjust the angle of the tablet, loosen the lever behind the tablet. Tighten the lever to lock the tablet into position.

